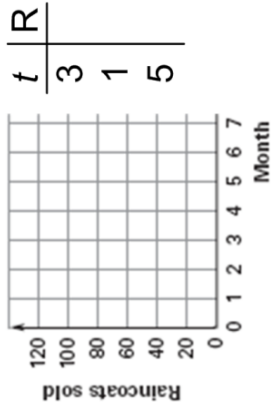


**Example 3** Applications of Absolute Value

A raincoat retailer has modeled the number of raincoats sold from Jan. through May by the function  $R = -30|t - 3| + 80$ . Assume that  $t=1$  is January. What is the maximum number of raincoats sold in one month? In what month is the maximum reached?

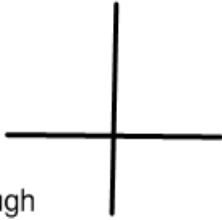


# Absolute Value Graphs

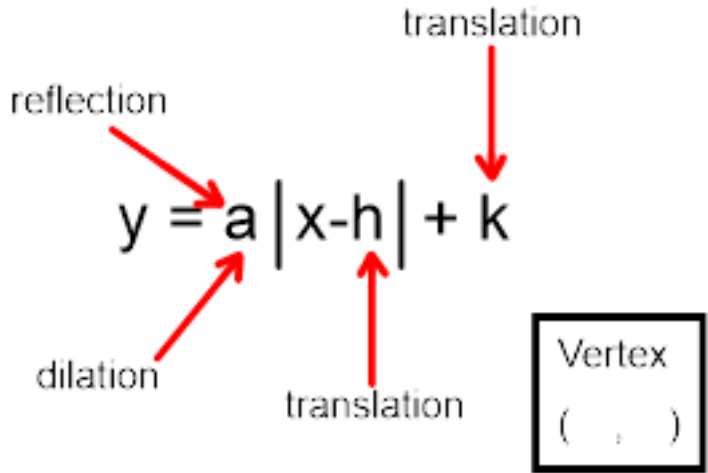
The parent graph of an absolute value function is

with vertex at

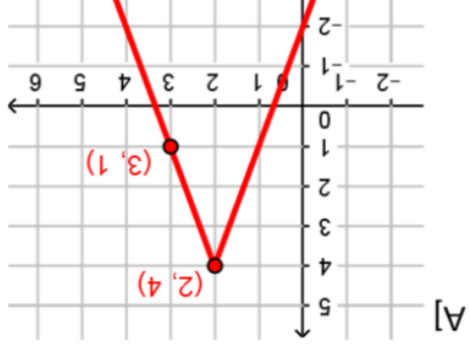
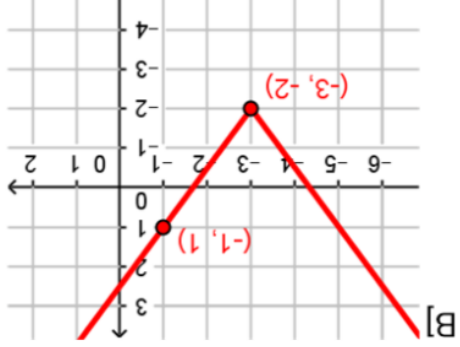
and passes through



# Transformations



**Example 2** Write an absolute value equation



**Example 1** Graph and describe an absolute value function

